

COMFORTER WIDE SERIES

Rise



Comforter Tall Wide
PR-501T-28D

Softouch
with STAIN DEFENSE



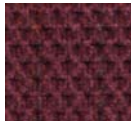
Palomino



Admiral



Evergreen



Cabernet



Comforter Small Wide
PR-501S-23



Comforter Medium Wide
PR-501M-26D



Comforter Large Wide
PR-501L-26D



Comforter Super 33 Wide
PR-502

Comforter Wide Series

The Comforter Wide Series offers five models with wider seats to accommodate people who need more space between the armrests. Weight capacities for these models are 375, 500 and 700 lbs., the highest in the industry. These models are constructed with the highest quality components for reliable, steady lifting and reclining.



Rise.

Roll.

Rest.

Ride.



YOUR LIFE IN MOTION

COMFORTER WIDE SERIES



	Comforter	Comforter	Comforter	Comforter	Comforter
Model Number	PR-501S-23	PR-501M-26D	PR-501L-26D	PR-501T-28D	PR-502
Size	Wide	Wide	Wide	Wide	Wide
Weight Capacity	375 Lb.	500 Lb.	500 Lb.	500 Lb.	700 Lb.
Recline Positions	3	3	3	3	Independent
Standard Fabrics	4	4	4	4	4
Fabric Options	32	32	32	32	32
Chaise Seat	YES	YES	YES	YES	NO
Back Type	Seam	Seam	Seam	Seam	Seam
Head Rest Cover	YES	YES	YES	YES	YES
Arm Covers	YES	YES	YES	YES	YES
Battery Back Up	YES	YES	YES	YES	YES
Overall Width	34.5"	38.5"	38.5"	41"	45"
Overall Height	40"	42"	44"	48"	47"
Width Between Arms	23"	27.5"	27.5"	29.5"	33"
Floor to Top of Seat	18"	19.5"	20.5"	22.5"	21"
Seat Depth	19.5"	21.5"	22.5"	24"	22"
Seat to Top of Back	25"	27"	28.5"	30"	29"
Seat to Top of Arm	6"	7"	5.5"	6"	7"
Floor to Back Edge of Seat Raised	27.5"	27.5"	29"	31"	31"
Floor to Front Edge of Seat Raised	24"	23.5"	25"	26"	27"
Seat Angle Raised	15°	16°	16°	18°	12°
Floor to Top of Foot Rest Reclined	23"	23"	23"	23"	21"
Floor to Top of Back Reclined	32"	32"	33"	36"	39"
Back Angle Closed	115°	115°	115°	115°	110°
Back Angle Reclined	145°	145°	145°	145°	150°
Foot Rest Angle Closed	90°	90°	90°	90°	90°
Foot Rest Angle Opened	180°	180°	180°	180°	180°
Distance Required from Wall Reclined	17"	17"	18"	18"	20"
Extension Reclined from Back of Seat to End of Foot Rest	39"	42"	43"	45"	45"
Life Time Warranty, Chair Frame, Lift Frame, Recline Mechanism	YES	YES	YES	YES	2 YRS.
Warranty on Electrical Parts	3 Yrs.	3 Yrs.	3 Yrs.	3 Yrs.	1 Yr.
Pro Rated Years 4 Thru 7	YES	YES	YES	YES	NO
Warranty on Mechanical Labor	3 Yrs.	3 Yrs.	3 Yrs.	3 Yrs.	2 Yrs.
Warranty on Electrical Labor	1 Yr.	1 Yr.	1 Yr.	1 Yr.	1 Yr.
Removable Back Standard	YES	YES	YES	YES	YES
Smart Tek System Standard	YES	YES	YES	YES	YES
Customizable (limited)	YES	YES	YES	YES	NO
Left Hand Control Option Available	YES	YES	YES	YES	YES
Extra Pocket Option Available	YES	YES	YES	YES	YES
Heat & Massage Option Available	YES	YES	YES	YES	YES
Foot Rest Extension Option Available	YES	YES	YES	YES	NO
Straight Lift Option Available	YES*	YES*	YES*	YES*	YES*

*Straight lift option must be set at our factory prior to shipping for these models.
 Sizes may vary depending on fabric, filling material, upholstery and carpet thickness. All measurements taken on concrete floor using levels and metal rulers.



501 M shown

Golden Craftsmanship

Each luxury lift & recline chair is hand crafted in our facility using decades of motion furniture experience.



501 M shown

Added Comfort and Safety

Designed to perform year after year using advanced technology backed by the best warranty.



501 M shown

Smart Engineering

Smooth, quiet lifting system offers a secure lift for the best performance.



Smart Tek

Our luxurious lift and recline chairs are equipped with electronics to help assure a secure lift every time you need it.



Battery Backup System

Safety System

Batteries not included. Safety System is designed to bring chair from recline to seated position in the event of a power outage.



Custom Sizing...

One size doesn't fit all with Golden Technologies seat lift chairs.



Literature is current at time of printing. Golden Technologies reserves the right to make changes to the product or literature at any time.



Complies with UL 73 and CSA C22.2 No. 68

Listing # E112417



GOLDEN
technologies