

M A X I C O M F O R T TM S E R I E S

Rise



Comforter Medium
PR-505M



Comforter Junior Petite
PR-505JP



Comforter Small
PR-505S



Comforter Large
PR-505L

SofTouch
with STAIN DEFENSE



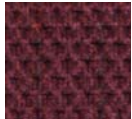
Palomino



Admiral



Evergreen



Cabernet

PR-505 MAXICOMFORTER FABRICS

MaxiComforter™ Series

Golden's exclusive MaxiComforter series is now available in four sizes, including the all-new Junior Petite! The MaxiComforters feature a plush, seamed backrest with lumbar support, a soft, comfortable seat and our unique "grip rite" arm design. Every MaxiComforter comes standard with our patented MaxiComfort Ultimate Recline Technology for correct spinal alignment, back pressure relief and improved circulation.



Rise.

Roll.

Rest.

Ride.



YOUR LIFE IN MOTION

MAXI COMFORT™ SERIES



Model Number	PR-505JP	PR-505S	PR-505M	PR-505L
Size	Jr. Petite	Small	Medium	Large
Weight Capacity	300 LB	300 LB	375 LB	375 LB
Recline Positions	MaxiComfort	MaxiComfort	MaxiComfort	MaxiComfort
Standard Fabrics	4	4	4	4
Fabric Options	32	32	32	32
Chaise Seat	YES	YES	YES	YES
Back Type	Seam	Seam	Seam	Seam
Head Rest Cover	YES	YES	YES	YES
Arm Covers	YES	YES	YES	YES
Battery Back Up	YES	YES	YES	YES
Overall Width	30.5"	31.5"	32.5"	34.5"
Overall Height	39"	40"	42"	44"
Width Between Arms	19"	20"	21"	23"
Floor to Top of Seat	18"	19"	19.5"	20.5"
Seat Depth	18.5"	19.5"	21"	22"
Seat to Top of Back	22.5"	25"	27"	28.5"
Seat to Top of Arm	6.5"	6"	7"	5.5"
Floor to Back Edge of Seat Raised	26"	27.5"	27.5"	29"
Floor to Front Edge of Seat Raised	22"	24"	23.5"	25"
Seat Angle Raised	16°	15°	16°	16°
Floor to Top of Foot Rest Reclined	24.5"	25.5"	24.5"	24"
Floor to Top of Back Reclined	21"	32"	32"	33"
Back Angle Closed	100°	100°	100°	100°
Back Angle Reclined	174°	174°	174°	174°
Foot Rest Angle Closed	90°	90°	90°	90°
Foot Rest Angle Opened	180°	180°	180°	180°
Distance Required from Wall Reclined	22"	23"	24"	27"
Extension Reclined from Back of Seat to End of Foot Rest	38"	39"	42"	43"
Life Time Warranty, Chair Frame, Lift Frame, Recline Mechanism	YES	YES	YES	YES
Warranty on Electrical Parts	3 Yrs.	3 Yrs.	3 Yrs.	3 Yrs.
Pro Rated Years 4 Thru 7	YES	YES	YES	YES
Warranty on Mechanical Labor	3 Yrs.	3 Yrs.	3 Yrs.	3 Yrs.
Warranty on Electrical Labor	1 Yr.	1 Yr.	1 Yr.	1 Yr.
Removable Back Option Available	NO	NO	NO	NO
Smart Tek System Standard	YES	YES	YES	YES
Customizable	NO	NO	NO	NO
Left Hand Control Available	YES	YES	YES	YES
Extra Pocket Option Available	YES	YES	YES	YES
Heat and Massage Option Available	YES	YES	YES	YES
Foot Rest Extension Option Available	YES	YES	YES	YES
Straight Lift Option Available	NO	NO	NO	NO
User Height (suggested)	5'0" and under	5'0"-5'3"	5'4"-5'10"	5'11"-6'2"



501 M shown

Golden Craftsmanship

Each luxury lift & recline chair is hand crafted in our facility using decades of motion furniture experience.



501 M shown

Added Comfort and Safety

Designed to perform year after year using advanced technology backed by the best warranty.



501 M shown

Smart Engineering

Smooth, quiet lifting system offers a secure lift for the best performance.



Sizes may vary depending on fabric, filling material, upholstery and carpet thickness. All measurements taken on concrete floor using levels and metal rulers.



Smart Tek

Our luxurious lift and recline chairs are equipped with electronics to help assure a secure lift every time you need it.



Literature is current at time of printing. Golden Technologies reserves the right to make changes to the product or literature at any time.



Complies with UL 73 and CSA C22.2 No. 68

Listing # E112417

