

V A L U E S E R I E S

# Rise

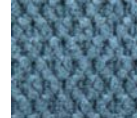


Monarch Medium  
PR-355M

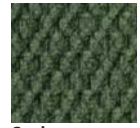
Softouch  
with STAIN DEFENSE



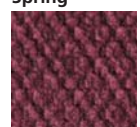
Autumn



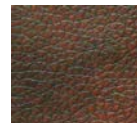
Cornflower



Spring



Rosewood



Chestnut



Capri  
PR-200



Monarch Large  
PR-355L



Monarch Plus Medium  
PR-359M



Monarch Plus Large  
PR-359L

## Value Series

The Value Series offers three well appointed models at a great value that offer hours of comfortable relaxation. The Capri features a classic, button-back design, while the Monarch models have a seam back. The Capri and Monarch have a split chaise pad and the Monarch Plus models feature a full chaise pad.



Rise. Roll. Rest. Ride.



YOUR LIFE IN MOTION



|   | Capri   | Monarch | Monarch | Monarch Plus | Monarch Plus |
|---|---------|---------|---------|--------------|--------------|
| <b>Model Number</b>   | PR-200  | PR-355M | PR-355L | PR-359M      | PR-359L      |
| <b>Size</b>   | Medium  | Medium  | Large   | Medium       | Large        |
| <b>Weight Capacity</b>  | 325 Lb. | 375 Lb. | 375 Lb. | 375 Lb.      | 375 Lb.      |
| <b>Recline Positions</b>  | 2       | 3       | 3       | 3            | 3            |
| <b>Standard Fabrics</b>   | 5       | 5       | 5       | 5            | 5            |
| <b>Fabric Options</b>   | 5       | 32      | 32      | 32           | 32           |
| <b>Chaise Seat</b>  | NO      | NO      | NO      | YES          | YES          |
| <b>Back Type</b>  | Button  | Seam    | Seam    | Seam         | Seam         |
| <b>Head Rest Cover</b>  | YES     | YES     | YES     | YES          | YES          |
| <b>Arm Covers</b>   | YES     | YES     | YES     | YES          | YES          |
| <b>Battery Back Up</b>  | YES     | YES     | YES     | YES          | YES          |
| <b>Overall Width</b>  | 31"     | 32"     | 34"     | 32"          | 34"          |
| <b>Overall Height</b>   | 41"     | 42"     | 44"     | 41.5"        | 43"          |
| <b>Width Between Arms</b>   | 20"     | 21"     | 23"     | 20"          | 23"          |
| <b>Floor to Top of Seat</b>   | 18"     | 18.5"   | 18.5"   | 19.5"        | 20.5"        |
| <b>Seat Depth</b>   | 19"     | 21.5"   | 22"     | 21"          | 22"          |
| <b>Seat to Top of Back</b>  | 27"     | 28"     | 30"     | 27.5"        | 29.5"        |
| <b>Seat to Top of Arm</b>   | 7"      | 7"      | 7"      | 6"           | 5.5"         |
| <b>Floor to Back Edge of Seat Raised</b>                              | 27"     | 27"     | 27"     | 28"          | 29"          |
| <b>Floor to Front Edge of Seat Raised</b>                             | 22"     | 23"     | 23"     | 24"          | 25"          |
| <b>Seat Angle Raised</b>  | 16°     | 16°     | 16°     | 16°          | 16°          |
| <b>Floor to Top of Foot Rest Reclined</b>                             | 23"     | 23"     | 22"     | 23"          | 23"          |
| <b>Floor to Top of Back Reclined</b>                                  | 35"     | 33"     | 33"     | 33"          | 33"          |
| <b>Back Angle Closed</b>  | 110°    | 110°    | 110°    | 110°         | 110°         |
| <b>Back Angle Reclined</b>  | 135°    | 140°    | 140°    | 140°         | 140°         |
| <b>Foot Rest Angle Closed</b>   | 90°     | 90°     | 90°     | 90°          | 90°          |
| <b>Foot Rest Angle Opened</b>   | 160°    | 176°    | 176°    | 176°         | 176°         |
| <b>Distance Required from Wall Reclined</b>                           | 11"     | 17"     | 18"     | 17"          | 18"          |
| <b>Extension Reclined from Back of Seat to End of Foot Rest</b>       | 40"     | 43"     | 43"     | 43"          | 43"          |
| <b>Life Time Warranty, Chair Frame, Lift Frame, Recline Mechanism</b> | YES     | YES     | YES     | YES          | YES          |
| <b>Warranty on Electrical Parts</b>                                   | 1 Yr.   | 2 Yrs.  | 2 Yrs.  | 2 Yrs.       | 2 Yrs.       |
| <b>Pro Rated Years 4 Thru 7</b>                                       | NO      | NO      | NO      | NO           | NO           |
| <b>Warranty on Mechanical Labor</b>                                   | 6 Mos.  | 6 Mos.  | 6 Mos.  | 6 Mos.       | 6 Mos.       |
| <b>Warranty on Electrical Labor</b>                                   | 6 Mos.  | 6 Mos.  | 6 Mos.  | 6 Mos.       | 6 Mos.       |
| <b>Removable Back Standard</b>  | NO      | YES     | YES     | YES          | YES          |
| <b>Smart Tek System Standard</b>                                      | YES     | YES     | YES     | YES          | YES          |
| <b>Customizable</b>   | NO      | NO      | NO      | NO           | NO           |
| <b>Left Hand Control Option Available</b>                             | YES     | YES     | YES     | YES          | YES          |
| <b>Extra Pocket Option Available</b>                                  | YES     | YES     | YES     | YES          | YES          |
| <b>Heat and Massage Option Available</b>                              | NO      | YES     | YES     | YES          | YES          |
| <b>Foot Rest Extension Option Available</b>                           | NO      | YES     | YES     | YES          | YES          |
| <b>Straight Lift Option Available</b>                                 | YES     | YES     | YES     | YES          | YES          |

Sizes may vary depending on fabric, filling material, upholstery and carpet thickness. All measurements taken on concrete floor using levels and metal rulers.

### Battery Backup System

Batteries not included. Battery Backup System is designed to bring the chair from the reclined to the seated position in the event of a power outage.



Battery Backup System



501 M shown

### Golden Craftsmanship

Each luxury lift & recline chair is hand crafted in our facility using decades of motion furniture experience.



501 M shown

### Added Comfort and Safety

Designed to perform year after year using advanced technology backed by the best warranty.



501 M shown

### Smart Engineering

Smooth, quiet lifting system offers a secure lift for the best performance.



### Smart Tek

Our luxurious lift and recline chairs are equipped with electronics to help assure a secure lift every time you need it.



Literature is current at time of printing. Golden Technologies reserves the right to make changes to the product or literature at any time.



Complies with UL 73 and CSA C22.2 No. 68

Listing # E112417

