

MAXICOMFORT™ CLOUD SERIES

Rise

Available NOW!



Cirrus Medium
PR-508M



Cirrus Small
PR-508S



Cirrus Large
PR-508L

Softouch
with STAIN DEFENSE



Palomino



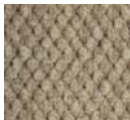
Admiral



Evergreen



Cabernet



Pearl



Brisa Buckskin*
* upcharge applies

Featuring the Industry's First Pocket Coil Seat Springs!



MAXI
COMFORT™
Ultimate Recline Technology

Cirrus
by Golden

The all-new Cirrus™ with MaxiComfort lift chair has taken comfort to a whole new level! The industry's first lift chair featuring pocket coil seat springs, the Cirrus joins the Cloud PR510 as the most comfortable chairs we've ever built! Our pocket coil spring technology and supportive foam casing molds to your lower body, gently cradling you in plush comfort. Experience the newest heights in lift chair comfort – experience the Cirrus!




Rise. Roll. Ride. **GOLDEN**
technologies
YOUR LIFE IN MOTION

Cirrus™



MAXICOMFORT™ CLOUD SERIES

Model Number	PR-508S	PR-508M	PR-508L
Size	Small	Medium	Large
Weight Capacity	300 LB	375 LB	375 LB
Recline Positions	Maxi Comfort	Maxi Comfort	Maxi Comfort
Standard Fabrics ¹	6	6	6
Fabric Options	All	All	All
Chaise Seat	Yes	Yes	Yes
Back Type	Biscuit	Biscuit	Biscuit
Head Rest Cover	Yes	Yes	Yes
Arm Covers	No	No	No
Battery Back Up	Yes	Yes	Yes
Overall Width	31.5"	32"	35"
Overall Height	41"	43"	46"
Width Between Arms	19.5"	20"	22"
Floor to Top of Seat	19.5"	20.5"	21.5"
Seat Depth	18"	20"	21"
Seat to Top of Back	27"	29"	31"
Seat to Top of Arm	5.5"	5.5"	6.5"
Seat Angle Raised	15°	15°	16°
Floor to Top of Foot Rest Reclined	23"	23"	24"
Floor to Top of Back Reclined	23"	22"	23"
Back Angle Closed	100°	100°	105°
Back Angle Reclined	170°	170°	175°
Foot Rest Angle Closed	90°	90°	90°
Foot Rest Angle Opened	180°	180°	180°
Distance Required from Wall Reclined	24"	26"	28"
Extension Reclined from Back of Seat to End of Foot Rest	40"	42"	43"
Life Time Warranty, Chair Frame, Lift Frame, Recline Mechanism	Yes	Yes	Yes
Warranty on Electrical parts	3 YR	3 YR	3 YR
Pro Rated Years 4 Thru 7	Yes	Yes	Yes
Warranty on Mechanical Labor	3 YR	3 YR	3 YR
Warranty on Electrical Labor	1 YR	1 YR	1 YR
Removable Back Option Available	No	No	No
Smart Tek System Standard	Yes	Yes	Yes
Customizable *	No	No	No
Left Hand Control Option Available	Yes	Yes	Yes
Extra Pocket Option Available	Yes	Yes	Yes
Heat & Massage Option Available	Yes	Yes	Yes
Foot Rest Extension Option Available	No	Yes	Yes
Straight Lift Option Available	No	No	No
User Height (suggested)	5'0"-5'3"	5'4"-5'10"	5'11"-6'2"

¹ Buckskin Brisa is a standard, stock fabric on PR508M. Upcharge applies on all sizes.

* See Customize Chart for Dimension limits. Sizes may vary depending on fabric, filling material, upholstery and carpet thickness. All measurements taken on concrete floor using levels and metal rulers.

Hand-blown, Overstuffed, Conjugated Microfiber Dacron Fill **SUPER SUPPORTIVE**

Quick Release AutoDrive Hand Control **EASY DISCONNECT**

Widest Fabric Selection in Industry **FITS IN ANY HOME DÉCOR**

Adjustable Anti-Skid/Scrape Leg Levelers **STABILITY & SUPPORT**

Kiln-dried Northern Maple Hardwood
 • Double-doweled at Stress Points
 • Reinforced Miter Blocks
 • Stapled and Glued **STRONGEST IN THE INDUSTRY**

10 Gauge Steel Scissor Mechanism **STRONG & LONG LASTING**

Rear Landing Legs **EXTRA STABILITY**

5 Heavy Duty Springs **LONG LASTING FOR INCREDIBLE COMFORT**



PR508M shown

Our patented technologies, combined with our superior kiln-dried northern maple hardwood frame design, provide the most comfortable lift and recline experience.



The Cirrus™ features a combination of pocket coil seat springs surrounded by foam that molds to your lower body for the ultimate support and comfort.



Battery Backup System

Batteries not included. Battery Backup System is designed to bring the chair from the reclined to the seated position in the event of a power outage.



Smart Tek

Our luxurious lift and recline chairs are equipped with electronics to help assure a secure lift every time you need it.



Literature is current at time of printing. Golden Technologies reserves the right to make changes to the product or literature at any time.



Complies with UL 73 and CSA C22.2 No. 68
 Listing # E112417
 FNAE 80-214A

