

V A L U E S E R I E S

# Rise



Monarch Medium  
PR-355M

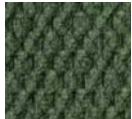
  
with STAIN DEFENSE



Autumn



Cornflower



Spring



Rosewood



Chestnut\*

Std. only on  
PR200, PR355M,  
PR355L



Capri  
PR-200



Monarch Large  
PR-355L



Monarch Plus Medium  
PR-359M



Monarch Plus Large  
PR-359L

## Value Series

The Value Series offers three well appointed models at a great value that offer hours of comfortable relaxation. The Capri features a classic, button-back design, while the Monarch models have a seam back. The Capri and Monarch have a split chaise pad and the Monarch Plus models feature a full chaise pad.



Rise. Roll. Ride.



YOUR LIFE IN MOTION



	Capri	Monarch	Monarch	Monarch Plus	Monarch Plus
<b>Model Number</b>	PR-200	PR-355M	PR-355L	PR-359M	PR-359L
<b>Size</b>	Medium	Medium	Large	Medium	Large
<b>Weight Capacity</b>	325 Lb.	375 Lb.	375 Lb.	375 Lb.	375 Lb.
<b>Recline Positions</b>	2	3	3	3	3
<b>Standard Fabrics</b>	5	5	5	4	4
<b>Fabric Options</b>	NONE	ALL	ALL	ALL	ALL
<b>Chaise Seat</b>	NO	NO	NO	YES	YES
<b>Back Type</b>	Button	Seam	Seam	Seam	Seam
<b>Head Rest Cover</b>	YES	YES	YES	YES	YES
<b>Arm Covers</b>	YES	YES	YES	YES	YES
<b>Battery Back Up</b>	YES	YES	YES	YES	YES
<b>Overall Width</b>	31"	32"	34"	32"	34"
<b>Overall Height</b>	41"	42"	44"	41.5"	43"
<b>Width Between Arms</b>	20"	21"	23"	21"	23"
<b>Floor to Top of Seat</b>	18"	18.5"	18.5"	19.5"	20.5"
<b>Seat Depth</b>	19"	21.5"	23"	21.5"	22.5"
<b>Seat to Top of Back</b>	27"	28"	30"	27.5"	29.5"
<b>Seat to Top of Arm</b>	7"	7"	7.5"	6"	7.5"
<b>Floor to Back Edge of Seat Raised</b>	27"	27"	27"	28"	29"
<b>Floor to Front Edge of Seat Raised</b>	22"	23"	23"	24"	25"
<b>Seat Angle Raised</b>	16°	16°	16°	16°	16°
<b>Floor to Top of Foot Rest Reclined</b>	23"	23"	22"	23"	23"
<b>Floor to Top of Back Reclined</b>	35"	33"	33"	33"	33"
<b>Back Angle Closed</b>	110°	110°	110°	110°	110°
<b>Back Angle Reclined</b>	135°	140°	140°	140°	140°
<b>Foot Rest Angle Closed</b>	90°	90°	90°	90°	90°
<b>Foot Rest Angle Opened</b>	160°	176°	176°	176°	176°
<b>Distance Required from Wall Reclined</b>	11"	17"	18"	17"	18"
<b>Extension Reclined from Back of Seat to End of Foot Rest</b>	40"	43"	43"	43"	43"
<b>Life Time Warranty, Chair Frame, Lift Frame, Recline Mechanism</b>	YES	YES	YES	YES	YES
<b>Warranty on Electrical Parts</b>	1 Yr.	2 Yrs.	2 Yrs.	2 Yrs.	2 Yrs.
<b>Pro Rated Years 4 Thru 7</b>	NO	NO	NO	NO	NO
<b>Warranty on Mechanical Labor</b>	6 Mos.	6 Mos.	6 Mos.	6 Mos.	6 Mos.
<b>Warranty on Electrical Labor</b>	6 Mos.	6 Mos.	6 Mos.	6 Mos.	6 Mos.
<b>Removable Back Option Available</b>	NO	YES	YES	YES	YES
<b>Smart Tek System Standard</b>	YES	YES	YES	YES	YES
<b>Customizable</b>	NO	NO	NO	NO	NO
<b>Left Hand Control Option Available</b>	YES	YES	YES	YES	YES
<b>Extra Pocket Option Available</b>	YES	YES	YES	YES	YES
<b>Heat and Massage Option Available</b>	NO	YES	YES	YES	YES
<b>Foot Rest Extension Option Available</b>	NO	NO	NO	YES	YES
<b>Straight Lift Option Available</b>	YES	YES	YES	YES	YES

Sizes may vary depending on fabric, filling material, upholstery and carpet thickness. All measurements taken on concrete floor using levels and metal rulers.

### Battery Backup System

Batteries not included. Battery Backup System is designed to bring the chair from the reclined to the seated position in the event of a power outage.



Battery Backup System



501 M shown

### Golden Craftsmanship

Each luxury lift & recline chair is hand crafted in our facility using decades of motion furniture experience.



501 M shown

### Added Comfort and Safety

Designed to perform year after year using advanced technology backed by the best warranty.



501 M shown

### Smart Engineering

Smooth, quiet lifting system offers a secure lift for the best performance.



### Smart Tek

In the event of a malfunction, our patented SmartTek™ diagnostic system enables you to get your lift chair up and running quickly.

Literature is current at time of printing. Golden Technologies reserves the right to make changes to the product or literature at any time.



IFTCHAIR.COM



Complies with UL 73 and CSA C22.2 No. 68 Listing # E112417 FNAE 80-214A



1-800-798-2499